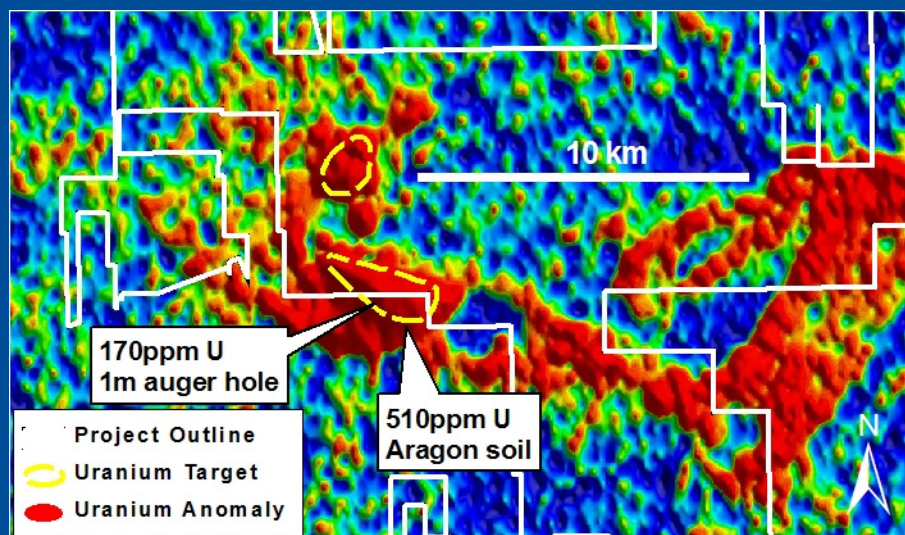
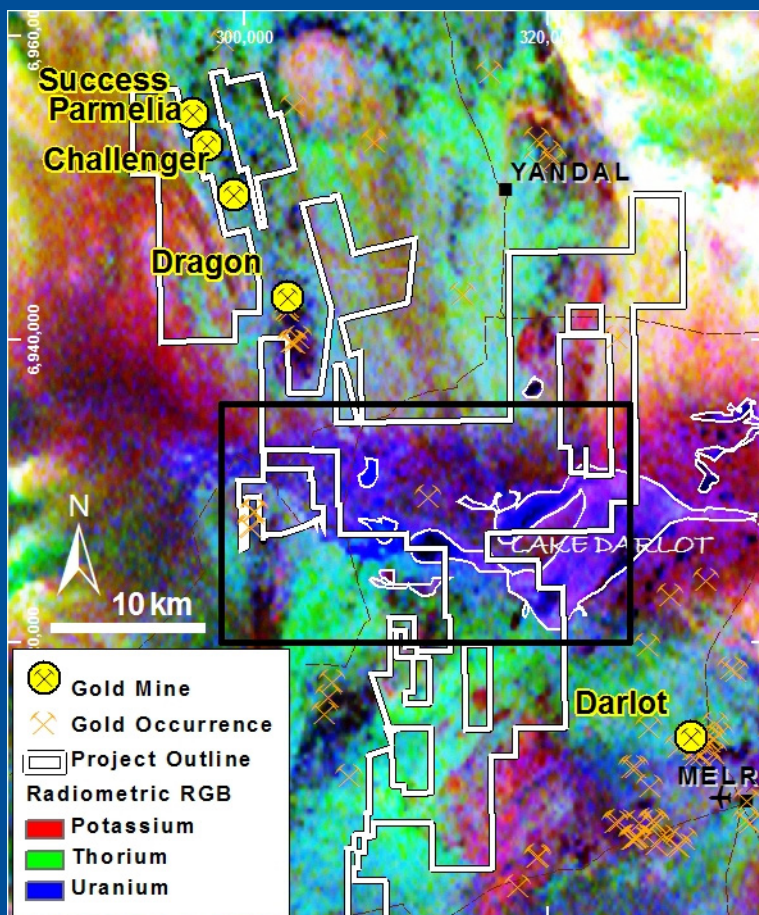


# Darlot Project

(100%)



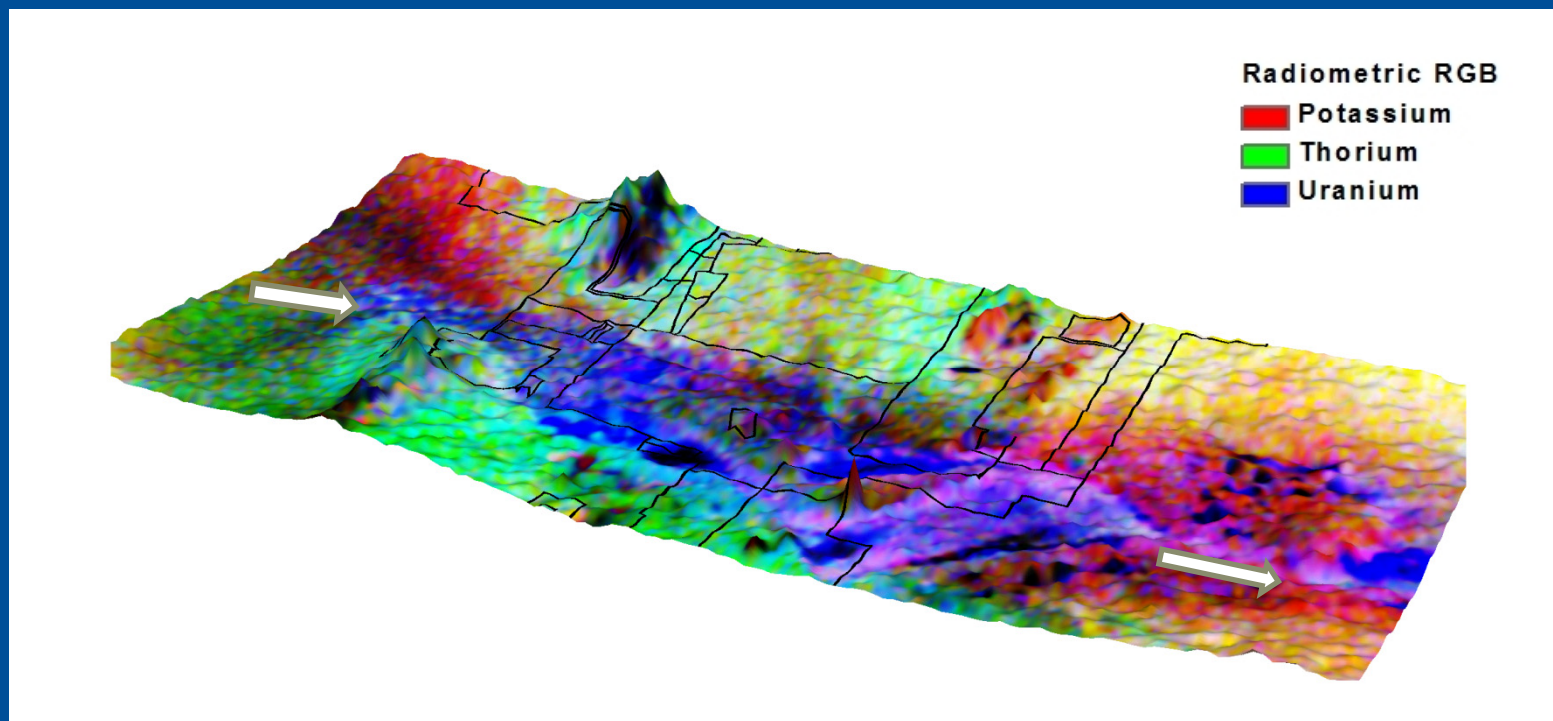
Target: Calcrete hosted uranium, “Yeelirrie style”

- Downstream from BHPB’s Yeelirrie, 52,500t  $U_3O_8$
- Strong evidence in GSWA radiometric data
- Little previous drilling on Lake Darlot itself

# Darlot Project



*RGB radiometrics on Topography*



*Looking north , across Lake Darlot*